



WELDFAST

[UK] LTD



TRANSLAS 
DUTCH TORCH TECHNOLOGY

EXTRACTION

NO FUMES, ONLY CLEAN AIR



About Weldfast MWA

Weldfast MWA is a leading independent wholesaler of welding, cutting, safety equipment and associated products. Weldfast MWA moved into the manufacturing sector not only by acquiring MWA to become the UK premier manufacturer of maintenance and repair electrodes, but also by UK manufacturing our own welding machines under the Cros Arc brand.

Weldfast MWA was established in 2007 with over 35 years of experience in the welding industry and after a mere 12 years, we already supply and support over 800 distributors in the UK and worldwide. We have a strong reputation for our family values and the quality of the brands we offer.

Our facilities include warehousing, offices, conference & training area, trade counter, showroom, manufacturing facilities, machine service department, remote and internal demonstration facility and a state of the art gas testing facility for our Weldgas regulators.

Here at Weldfast MWA, as a family run business, we know the value of our customers, and therefore offer the highest quality service and products, at the best possible price.



TABLE OF CONTENTS

SAFE & EFFECTIVE EXTRACTION OF WELDING FUMES AT THE SOURCE

ABOUT TRANSLAS	2
ABOUT WELDING FUMES	4
8XE MIG EXTRACTOR	5
8TE TIG EXTRACTOR	19
CLEARO2	31



About Welding Fumes:

Welding fumes contain vapours, a mixture of airborne gas by-products and fine particles. The composition of the mixture depends on the welding method and the products that are welded. The vapours and gases released during welding can lead to serious health problems. Short-term exposure can result in nausea, dizziness, or eye, nose, and throat irritation.

Prolonged exposure is like inhaling ultra-fine metal dust which can lead to cancer of the lung, damage to the brain, and kidney damage. Certain gases, such as helium, carbon dioxide, and argon, displace oxygen and argon specifically poses suffocation risks, particularly in enclosed work areas. For this reason, Translas, a Dutch welding torch manufacturer, developed fume welding torches – 7XE, 8XE MIG, and 8TE TIG Extractors – that extract the welding fumes directly at the source up to 98%.

CLEAN AIR

- ✓ **SOURCE EXTRACTION & FILTRATION**
- ✓ **ENGINEERED FOR THE WELDING PROCESS**
- ✓ **COMPLETE RANGE FOR YOUR PLANT/SHOP**
- ✓ **HIGH QUALITY, TESTED EQUIPMENT**
- ✓ **USER-FRIENDLY UNITS, READY TO USE**

TRANSLAS 
DUTCH TORCH TECHNOLOGY

8XE MIG EXTRACTOR

EXTRACTION

NO FUMES, ONLY CLEAN AIR





8XE MIG EXTRACTOR



CLEAN AIR

8XE MIG EXTRACTOR

SAFE & EFFECTIVE EXTRACTION OF WELDING FUMES DIRECTLY AT THE SOURCE.

The 8XE MIG Extractor integrates the most efficient fume extraction structure in the welding industry. The torch comes with three different angles, 30°, 45° and straight. The 8XE MIG Extractor , combined with the ClearO2 W-series 100 and 200 , captures up to 98% of welding fumes directly at the source. The 8XE MIG Extractor provides the safest and most effective solution for welders and workers to breathe CLEAN AIR and better work environments.



8XE MIG EXTRACTOR



PRODUCT FEATURES

- RESULTS MEASURED BY DUTCH RESEARCH INSTITUTE (TNO) IN "WORST CASE ROOM".
UNIQUE CONTACT TIP FOR MAXIMUM DURABILITY.
VARIOUS GAS NOZZLES FOR BEST PERFORMANCE.
DESIGNED FOR ENLARGED ANGULAR MOVEMENT.
MADE FROM VERY STRONG DSM PLASTIC.
THE SWAN NECK IS SECURED IN TWO PLACES.



- PATENTED
LIGHT-WEIGHT
ROBUST

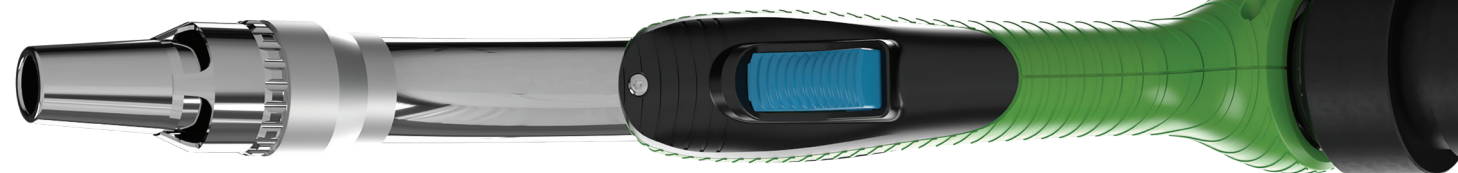
CLEAN AIR

SOURCE EXTRACTION



THE ROBUST CONNECTION BETWEEN SWANNECK & METAL NECK.

The new nozzle holder provides a robust connection between Swanneck and Metal Neck. It is designed to take the biggest blows in any industrial environment.



UNIQUE NOZZLE DESIGN FOR OPTIMAL PERFORMANCE AND DURABILITY.

The nozzle design is unique to provide the best results. Openings, wall thickness and grip ribs are thoroughly developed for optimal operation and best performance.

Reduces Welding Fumes up to 98%

Lowest Under-Pressure in the Market

ERGONOMIC BALL SOCKET: 30° ANGLE AND 360° ROTATABLE

8XE ball joint has a 30° vertical angular movement combined with a 360° swivel and a full stop. Providing excellent maneuverability and leaving cables and hoses untwisted and thereby leakage and breakage free. This combination is new to the market. It offers excellent maneuverability, maximizing comfort and minimizing fatigue.

Swan Neck and Power/Water Cable in Cooperation with DINSE GmbH



EXTRACTION



8XE MIG EXTRACTOR LINE



8XE MIG EXTRACTOR



250
MINI **AIR COOLED**

CO2 - 280 AMP
Mixed Gases - 250 AMP
Duty Cycle - 100%



8XE MIG EXTRACTOR



300 **AIR COOLED**

CO2 - 320 AMP
Mixed Gases - 300 AMP
Duty Cycle - 100%



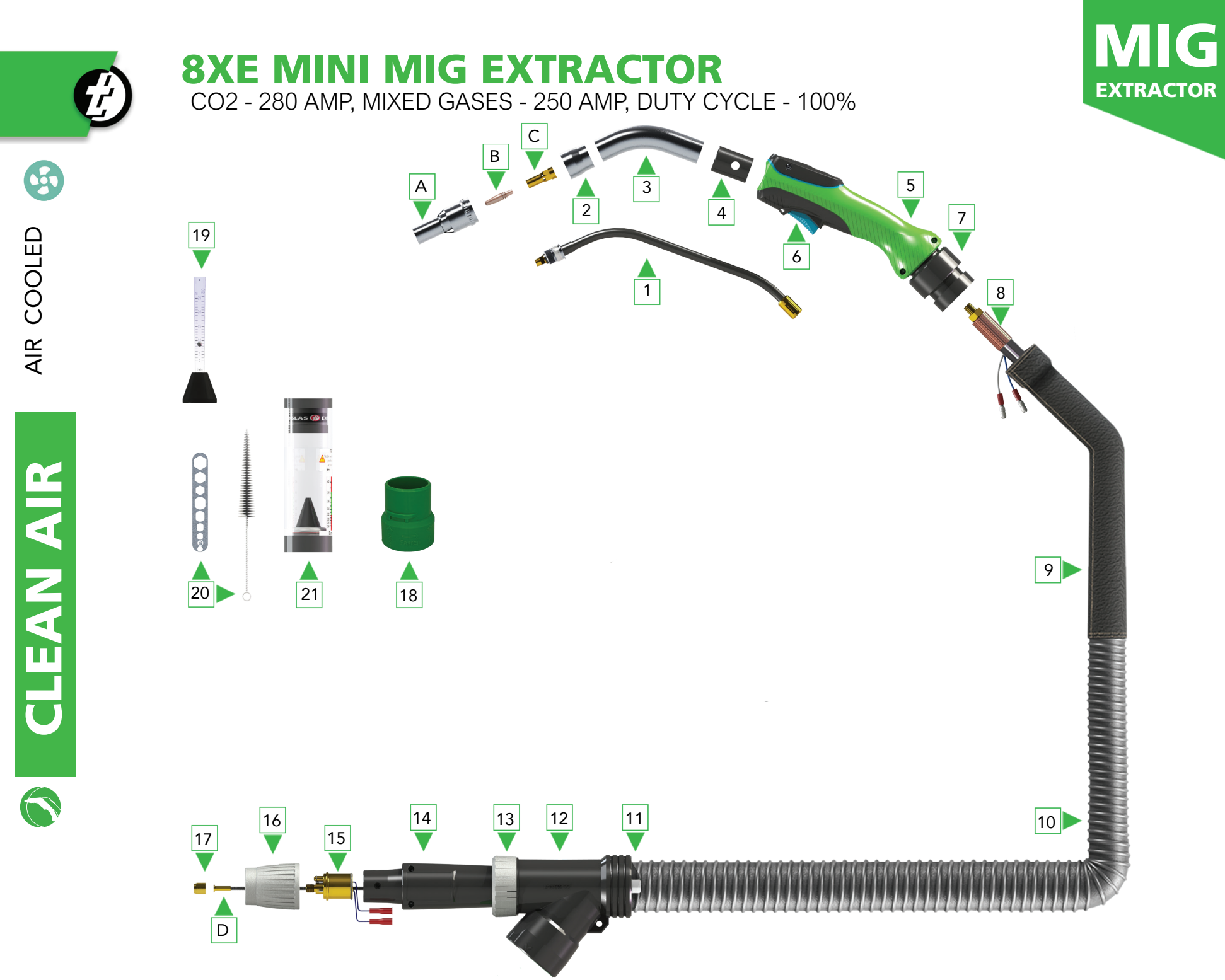
8XE MIG EXTRACTOR



500 **WATER COOLED**

CO2 - 550 AMP
Mixed Gases - 500 AMP
Duty Cycle - 100%

EXTRACTION



MIG EXTRACTOR

8XE MINI MIG EXTRACTOR

CO2 - 280 AMP, MIXED GASES - 250 AMP, DUTY CYCLE - 100%

ITEM	PART NO.	DESCRIPTION	PACK QTY
COMPLETE TORCHES			
	8XE1000301000	8XE MINI Extractor 3mtr gas cooled - 45° (standard)	1
	8XE1000401000	8XE MINI Extractor 4mtr gas cooled - 45° (standard)	1
	8XE1000501000	8XE MINI Extractor 5mtr gas cooled - 45° (standard)	1
	8XE1100301000	8XE MINI Extractor 3mtr gas cooled - 30°	1
	8XE1100401000	8XE MINI Extractor 4mtr gas cooled - 30°	1
	8XE1100501000	8XE MINI Extractor 5mtr gas cooled - 30°	1

ITEM	PART NO.	DESCRIPTION	PACK QTY
CONSUMABLES			
A	3937000	Nozzle conical 12mm	5
	3937001	Nozzle conical 14mm special	5
	3937002	Nozzle conical 14mm	5
B	140108	Contact tip 8XE - 0,8	25
	140110	Contact tip 8XE - 1,0	25
	1401101	Contact tip 8XE - 1,0 CuCrZr	25
	1401102	Contact tip 8XE - 1,0 Alu	25
	140112	Contact tip 8XE - 1,2	25
	1401121	Contact tip 8XE - 1,2 CuCrZr	25
C	39327100	Tip adaptor	10
	301535	Plastic coated liner blue (1,5/4,5) 3mtr - for 0,8mm steel wire	1
	301545	Plastic coated liner blue (1,5/4,5) 4mtr - for 0,8mm steel wire	1
STEEL	301555	Plastic coated liner blue (1,5/4,5) 5mtr - for 0,8mm steel wire	1
	302535	Plastic coated liner red (2,0/4,5) 3mtr - for 1,0/1,2mm steel wire	1
	302545	Plastic coated liner red (2,0/4,5) 4mtr - for 1,0/1,2mm steel wire	1
	302555	Plastic coated liner red (2,0/4,5) 5mtr - for 1,0/1,2mm steel wire	1
	301538	Teflon liner blue (1.5/4.0) 3mtr - for 0,8mm aluminium wire	1
	301548	Teflon liner blue (1.5/4.0) 4mtr - for 0,8mm aluminium wire	1
	301558	Teflon liner blue (1.5/4.0) 5mtr - for 0,8mm aluminium wire	1
	302538	Teflon liner red (2.0/4.0) 3mtr - for 1,0-1,2mm aluminium wire	1
	302548	Teflon liner red (2.0/4.0) 4mtr - for 1,0-1,2mm aluminium wire	1
	302558	Teflon liner red (2.0/4.0) 5mtr - for 1,0-1,2mm aluminium wire	1
ALUMINIUM			

ITEM	PART NO.	DESCRIPTION	PACK QTY
SPARE PARTS			
1	39301045	Swanneck 45°	1
	39301030	Swanneck 30°	1
	3950005	PEEK ring to fix nozzle holder (not shown)	5
	305879	O-ring (not shown)	10
2	3950000	Nozzle holder	1
3	3950045	Metal neck 45°	1
	3950046	Metal neck 30°	1
4	3950500	Adapter to fit MINI neck	1
5	391000	Handle green/black complete with trigger	1
6	391200	Trigger	1
	391245	Spring for trigger (not shown)	5
	391250	Micro switch complete (not shown)	1
7	381900	Cable support set with ball-and-socket joint	1
8	259263X8	Cable assembly 3mtr	1
	259264X8	Cable assembly 4mtr	1
	259265X8	Cable assembly 5mtr	1
9	260019	Leather-sheathing with Velcro 2mtr	1
10	340303	Fume extraction hose 30-38mm 3mtr	1
	340304	Fume extraction hose 30-38mm 4mtr	1
	340305	Fume extraction hose 30-38mm 5mtr	1
11	398031	Hose connection	1
12	398100	Housing (Y-shape) for fume extraction hose	1
13	398015	Connection ring	1
14	398010	Housing set for central connector	1
15	305298E	Central connector Euro	1
16	8M9420	Adaptor nut	2
17	305315	Liner positioner nut	10
18	398110	Hose adapter	1
19	406050	Gasflow meter	1
20	371208	Tool set (brush and multitool)	1
21	371350	Airflow meter MINI Extractor	1
-	320300	Ceramic dry film spray 400 ml (not shown)	12

EXTRACTION



AIR COOLED

CLEAN AIR

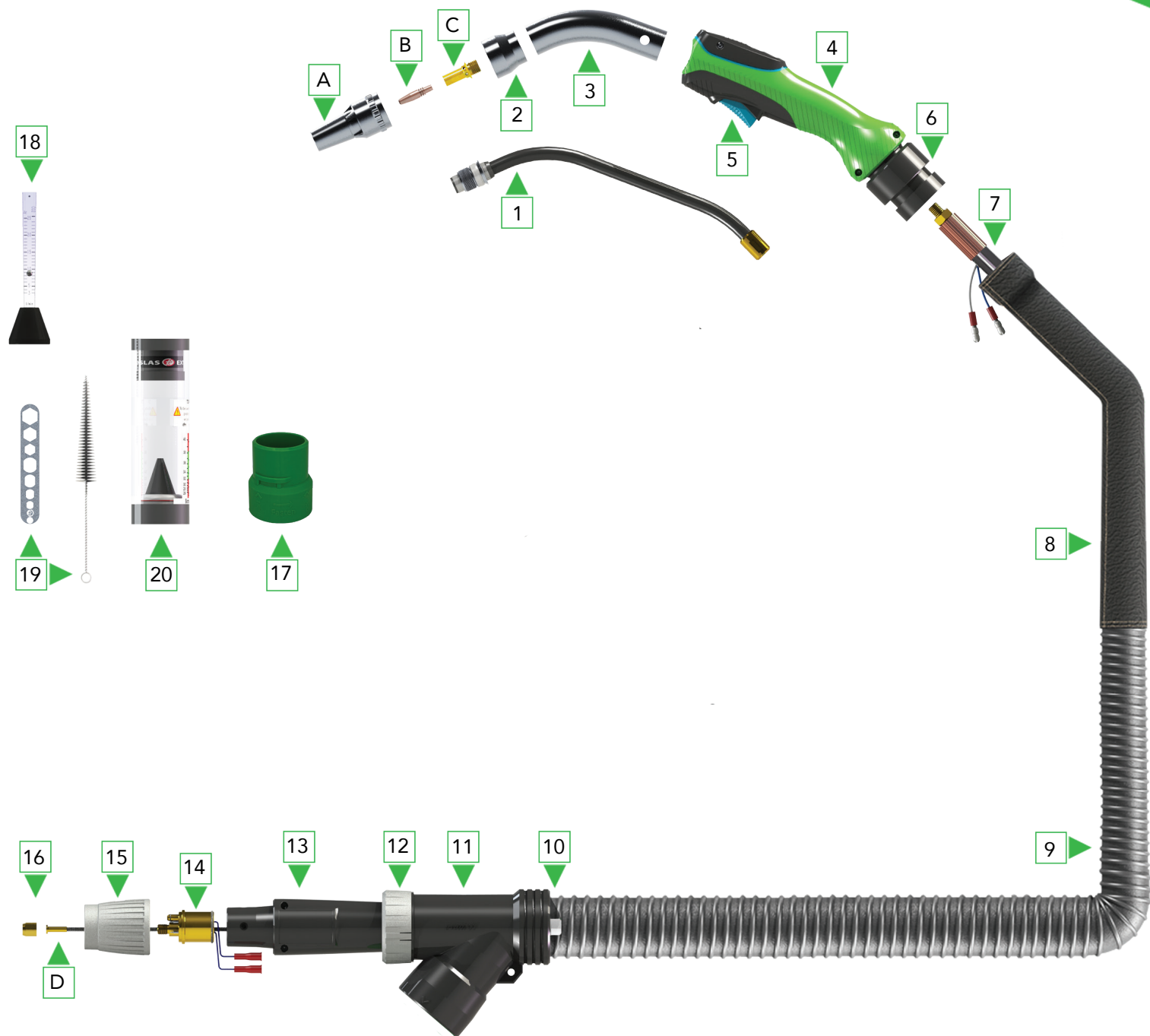


8XE MIG EXTRACTOR

CO2 - 320 AMP, MIXED GASES - 300 AMP, DUTY CYCLE - 100%

MIG

EXTRACTOR



ITEM	PART NO.	DESCRIPTION	PACK QTY
COMPLETE TORCHES			
	8XE3020301000	8XE Extractor 3mtr gas cooled - 45° (standard)	1
	8XE3020401000	8XE Extractor 4mtr gas cooled - 45° (standard)	1
	8XE3020501000	8XE Extractor 5mtr gas cooled - 45° (standard)	1
	8XE3120301000	8XE Extractor 3mtr gas cooled - 30°	1
	8XE3120401000	8XE Extractor 4mtr gas cooled - 30°	1
	8XE3120501000	8XE Extractor 5mtr gas cooled - 30°	1

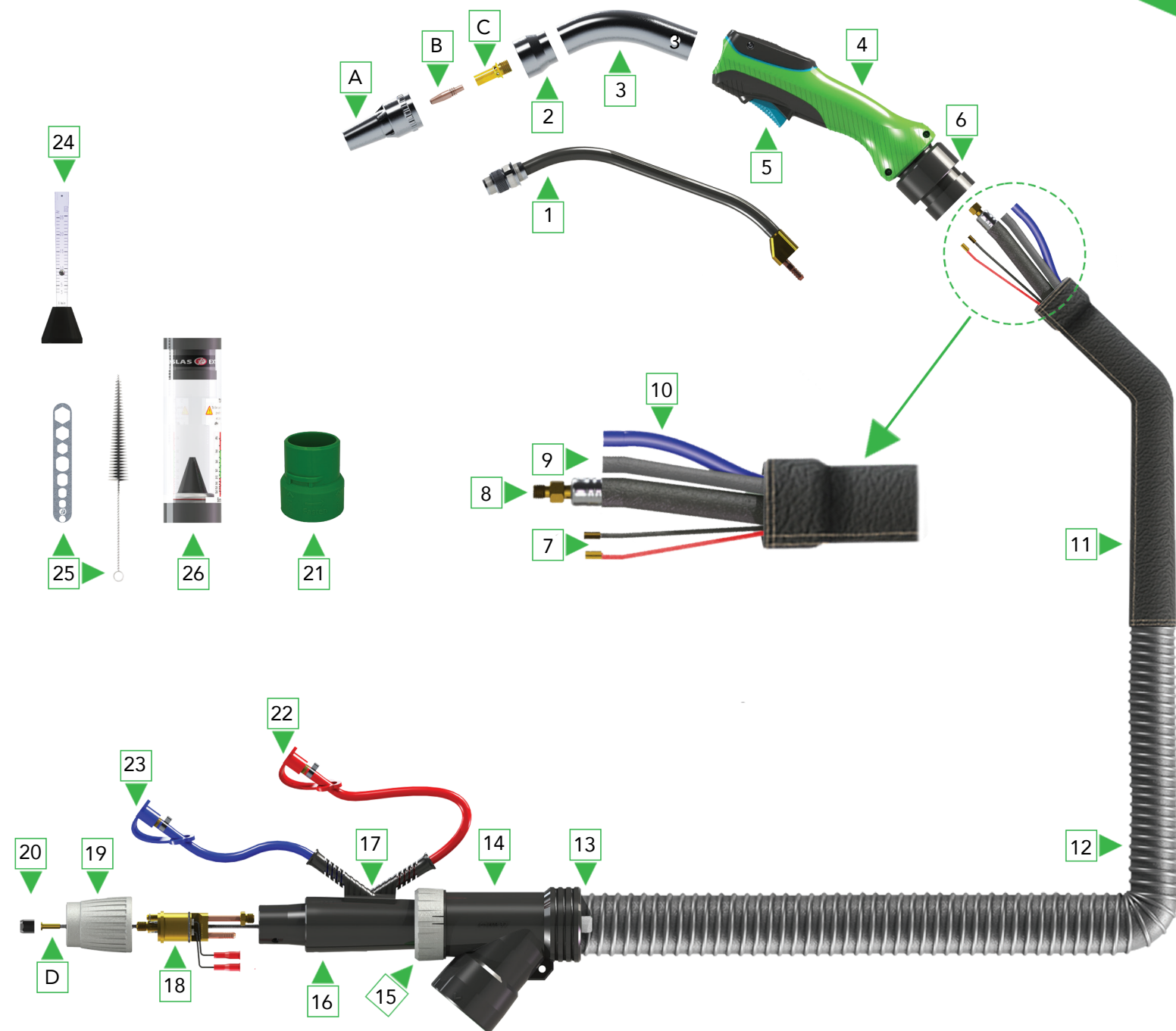
ITEM	PART NO.	DESCRIPTION	PACK QTY	
CONSUMABLES				
A	3937041	Nozzle conical 14mm special	5	
	3937045	Nozzle conical 17mm special	1	
B	140110	Contact tip 8XE - 1,0	25	
	1401101	Contact tip 8XE - 1,0 CuCrZr	25	
	1401102	Contact tip 8XE - 1,0 Alu	25	
	140112	Contact tip 8XE - 1,2	25	
	1401121	Contact tip 8XE - 1,2 CuCrZr	25	
	1401122	Contact tip 8XE - 1,2 Alu	25	
	140116	Contact tip 8XE - 1,6	25	
	1401161	Contact tip 8XE - 1,6 CuCrZr	25	
C	39327200	Tip adaptor	10	
D	302535	STEEL	Plastic coated liner red (2,0/4,5) 3mtr - for 1,0/1,2mm steel wire	1
	302545		Plastic coated liner red (2,0/4,5) 4mtr - for 1,0/1,2mm steel wire	1
	302555		Plastic coated liner red (2,0/4,5) 5mtr - for 1,0/1,2mm steel wire	1
	303635		Plastic coated liner yellow (2,5/4,5) 3mtr - for 1,6mm steel wire	1
	303645		Plastic coated liner yellow (2,5/4,5) 4mtr - for 1,6mm steel wire	1
	303655		Plastic coated liner yellow (2,5/4,5) 5mtr - for 1,6mm steel wire	1
	302538	ALUMINIUM	Teflon red (2.0/4.0) 3mtr - for 1,0-1,2mm aluminium wire	1
	302548		Teflon red (2.0/4.0) 4mtr - for 1,0-1,2mm aluminium wire	1
	302558		Teflon red (2.0/4.0) 5mtr - for 1,0-1,2mm aluminium wire	1
	303638		Teflon yellow (2.7/4.7) 3mtr - for 1,6mm aluminium wire	1
	303648		Teflon yellow (2.7/4.7) 4mtr - for 1,6mm aluminium wire	1
	303658		Teflon yellow (2.7/4.7) 5mtr - for 1,6mm aluminium wire	1
	304830	STAINLESS STEEL	Graphite liner black (2,0/4,0) 3mtr combiliner - for 1,0/1,2mm	1
	304831		Graphite liner black (2,0/4,0) 4mtr combiliner - for 1,0/1,2mm	1
	304832		Graphite liner black (2,0/4,0) 5mtr combiliner - for 1,0/1,2mm	1
	3048351		Graphite liner black (2,3/4,7) 3mtr combiliner - for 1,6mm	1
	3048361		Graphite liner black (2,3/4,7) 4mtr combiliner - for 1,6mm	1
	3048371		Graphite liner black (2,3/4,7) 5mtr combiliner - for 1,6mm	1

ITEM	PART NO.	DESCRIPTION	PACK QTY
SPARE PARTS			
1	39302045	Swanneck 45°	1
	39302030	Swanneck 30°	1
	3950205	PEEK ring to fix nozzle holder (not shown)	5
	20071610	O-ring (not shown)	10
2	3950200	Nozzle holder	1
3	3950245	Metal neck 45°	1
	3950246	Metal neck 30°	1
4	391000	Handle green/black complete with trigger	1
5	391200	Trigger	1
	391245	Spring for trigger (not shown)	5
	391250	Micro switch complete (not shown)	1
6	381920	Cable support set with ball-and-socket joint	1
7	259363X8	Cable assembly 3mtr	1
	259364X8	Cable assembly 4mtr	1
	259365X8	Cable assembly 5mtr	1
8	260018	Leather-sheathing with Velcro 2mtr	1
9	3402032	Fume extraction hose 36-44mm 3mtr	1
	3402042	Fume extraction hose 36-44mm 4mtr	1
	3402052	Fume extraction hose 36-44mm 5mtr	1
10	398030	Hose connection	1
11	398100	Housing (Y-shape) for fume extraction hose	1
12	398015	Connection ring	1
13	398010	Housing set for central connector	1
14	305298E	Central connector Euro	1
15	8M9420	Adaptor nut	2
16	305315	Liner positioner nut	10
17	398110	Hose adapter	1
18	406050	Gasflow meter	1
19	371208	Tool set (brush and multitool)	1
20	371300	Airflow meter Extractor	1
-	320300	Ceramic dry film spray 400 ml (not shown)	12

EXTRACTION

8XE MIG EXTRACTOR

CO2 - 550 AMP, MIXED GASES - 500 AMP, DUTY CYCLE - 100%



MIG

EXTRACTOR

ITEM	PART NO.	DESCRIPTION	PACK QTY
COMPLETE TORCHES			
	8XE5060301000	8XE Extractor 3mtr water cooled - 45° (standard)	1
	8XE5060401000	8XE Extractor 4mtr water cooled - 45° (standard)	1
	8XE5060501000	8XE Extractor 5mtr water cooled - 45° (standard)	1
	8XE5160301000	8XE Extractor 3mtr water cooled - 30°	1
	8XE5160401000	8XE Extractor 4mtr water cooled - 30°	1
	8XE5160501000	8XE Extractor 5mtr water cooled - 30°	1

ITEM	PART NO.	DESCRIPTION	PACK QTY	
CONSUMABLES				
A	3937041	Nozzle conical 14mm special	5	
	3937045	Nozzle conical 17mm special	1	
B	140110	Contact tip 8XE - 1,0	25	
	1401101	Contact tip 8XE - 1,0 CuCrZr	25	
	1401102	Contact tip 8XE - 1,0 Alu	25	
	140112	Contact tip 8XE - 1,2	25	
	1401121	Contact tip 8XE - 1,2 CuCrZr	25	
	1401122	Contact tip 8XE - 1,2 Alu	25	
	140116	Contact tip 8XE - 1,6	25	
	1401161	Contact tip 8XE - 1,6 CuCrZr	25	
C	39327200	Tip adaptor	10	
D	302535	STEEL	Plastic coated liner red (2,0/4,5) 3mtr - for 1,0/1,2mm steel wire	1
	302545		Plastic coated liner red (2,0/4,5) 4mtr - for 1,0/1,2mm steel wire	1
	302555		Plastic coated liner red (2,0/4,5) 5mtr - for 1,0/1,2mm steel wire	1
	303635		Plastic coated liner yellow (2,5/4,5) 3mtr - for 1,6mm steel wire	1
	303645		Plastic coated liner yellow (2,5/4,5) 4mtr - for 1,6mm steel wire	1
	303655		Plastic coated liner yellow (2,5/4,5) 5mtr - for 1,6mm steel wire	1
	302538	ALUMINIUM	Teflon red (2,0/4,0) 3mtr - for 1,0-1,2mm aluminium wire	1
	302548		Teflon red (2,0/4,0) 4mtr - for 1,0-1,2mm aluminium wire	1
	302558		Teflon red (2,0/4,0) 5mtr - for 1,0-1,2mm aluminium wire	1
	303638		Teflon yellow (2,7/4,7) 3mtr - for 1,6mm aluminium wire	1
	30364		Teflon yellow (2,7/4,7) 4mtr - for 1,6mm aluminium wire	1
	303658		Teflon yellow (2,7/4,7) 5mtr - for 1,6mm aluminium wire	1
	304830	STAINLESS STEEL	Graphite liner black (2,0/4,0) 3mtr combiliner - for 1,0/1,2mm	1
	304831		Graphite liner black (2,0/4,0) 4mtr combiliner - for 1,0/1,2mm	1
	304832		Graphite liner black (2,0/4,0) 5mtr combiliner - for 1,0/1,2mm	1
	3048351		Graphite liner black (2,3/4,7) 3mtr combiliner - for 1,6mm	1
	3048361		Graphite liner black (2,3/4,7) 4mtr combiliner - for 1,6mm	1
	3048371		Graphite liner black (2,3/4,7) 5mtr combiliner - for 1,6mm	1

ITEM	PART NO.	DESCRIPTION	PACK QTY
SPARE PARTS			
1	39303045	Swanneck 45°	1
	39303030	Swanneck 30°	1
	3950205	PEEK ring to fix nozzle holder (not shown)	5
	20071610	O-ring (not shown)	10
2	3950200	Nozzle holder	1
3	3950245	Metal neck 45°	1
	3950246	Metal neck 30°	1
4	391000	Handle green/black complete with trigger	1
5	391200	Trigger	1
	391245	Spring for trigger (not shown)	5
	391250	Micro switch complete (not shown)	1
6	381920	Cable support set with ball-and-socket joint	1
7	306505	Switch cable 1x0,75mm² per mtr	100
8	258513X8	Power/water cable 3mtr	1
	258514X8	Power/water cable 4mtr	1
	258515X8	Power/water cable 5mtr	1
9	2585313XE	Outer liner 3mtr	1
	2585314XE	Outer liner 4mtr	1
	2585315XE	Outer liner 5mtr	1
10	258535	Water inlet hose 5x8mm blue per mtr	100
	258566	Water outlet hose 5x8mm red per mtr	100
11	260018	Leather-sheathing with Velcro 2mtr	1
12	3402032	Fume extraction hose 36-44mm 3mtr	1
	3402042	Fume extraction hose 36-44mm 4mtr	1
	3402052	Fume extraction hose 36-44mm 5mtr	1
13	398030	Hose connection	1
14	398100	Housing (Y-shape) for fume extraction hose	1
15	398015	Connection ring	1
16	398010	Housing set for central connector	1
17	350881	Water hose guide	1
18	305304E2	Central connector Euro	1
19	8M9420	Adaptor nut	2
20	305315	Liner positioner nut	10
21	398110	Hose adapter	1
22	258701	Waterstop red	10
23	258702	Waterstop blue	10
24	406050	Gasflow meter	1
25	371208	Tool set (brush and multitool)	1
26	371300	Airflow meter Extractor	1
-	320300	Ceramic dry film spray 400 ml (not shown)	12

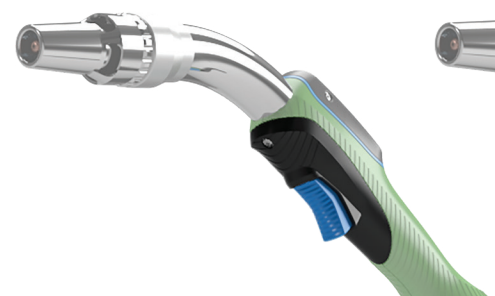


8XE MIG EXTRACTOR

CONSUMABLES TO FIT YOUR SPECIFIC WELDING APPLICATION

MIG
EXTRACTOR

The purpose of the bottom caps on 8XE MIG Extractor is to provide a solid welding platform. The bottom caps are available for 8XE MIG Extractor 30°, 45°, and straight version



Regular



Trigger Protection



Blind
(in combination with 1-button top cover)



Pistol

BOTTOM CAPS

CONTACT TIPS



The special contact tips for the complete 8XE MIG Extractor series are designed for a longer lifetime.

You can choose from:

- Standard copper for everyday welding.
- Available in sizes from 0.8mm - 2.4mm.
- Special tips for aluminum welding.

NOZZLE OPTIONS

There are different nozzle variations to suit any kind of joint application and deliver best welding results. The nozzles can be changed in a second.

MINI EXTRACTOR

12mm

The nozzle offers slightly more comprehensive shielding gas coverage on medium-thickness materials in butt and fillet applications, and outside-corner joints.



12MM

8XE REGULAR / MINI

14mm-Special

Where space is limited and fit is tight, this nozzle offers better access and more excellent shielding gas coverage to prevent porosity. This 14mm special nozzle is delivered as a standard on every extractor torch.



SPECIAL 14MM

8XE REGULAR

17mm-Special

For heavier-thickness, high-current and high-deposition butt and lap joint applications, this nozzle offers more excellent shielding gas coverage to prevent porosity.



SPECIAL 17MM

EXTRACTION

CH-1



8XE MIG EXTRACTOR

CONSUMABLES TO FIT YOUR SPECIFIC WELDING APPLICATION

MIG
EXTRACTOR

TOP COVER MODULES



Standard



Pressure Relief



One Button



Up / Down



Potential Meter



(Special request depending on welding machine)

LINERS

Choose the right liner for your wire diameter and type when working with a 8XE Extractor Torch:



Blue: (1.5/4.5) from 3mtr to 5mtr



Red: (2.0/4.5) from 3mtr to 5mtr



Yellow: (2.5/4.5) from 3mtr to 5mtr

All liner types are suitable for stainless steel applications. For Aluminium application, there are the following types:

Blue , Red and Yellow in Teflon.



WIRE FEED CONNECTORS

EURO CONNECTOR

There are wire feed connectors available to fit any type of machine. Due to the design of the backend housing, you can switch between the connector types with ease.



MAINTENANCE

AIRFLOW METER

Always use the Airflow meter to ensure maximum extraction effect.

GAS METER

The gas meter is used for best weld quality by keeping the right amount of shielding gas around the weld seam.

CERAMIC SPRAY

Prolong the life of your gun and all spare parts by applying the ceramic spray to the 8XE Extractor before work.



EXTRACTION

EXTRACTION

CH-1

TRANSLAS 
DUTCH TORCH TECHNOLOGY

8TE TIG EXTRACTOR

EXTRACTION

HARMFUL PARTICULATE ELIMINATED, ONLY CLEAN AIR





8TE TIG EXTRACTOR



CLEAN AIR

SOURCE EXTRACTION

The 8TE TIG Extractor offers break through integrated at-source fume extraction for theTIG welding process.

DID YOU KNOW?

Stainless steel and aluminum welding produces the most toxic particulates that are found in the harmful welding fumes because of Hexavalent Chromium and Manganese .

VARIOUS SWITCH MODULES AVAILABLE.

Positioned at approximately 5 degrees, the switch module eliminates any tension in the fingers and minimizes the risk of cramps due to daily repetitive movements.

EXTREMELY FLEXIBLE HOSE ON FIRST METER

The 8TE Extractor has an extremely flexible vacuum hose specifically the first one meter from the handle

Reduces
Welding Fumes
up to **95%**

Standard
TIG
Consumables

CLEAN AIR



8TE TIG EXTRACTOR

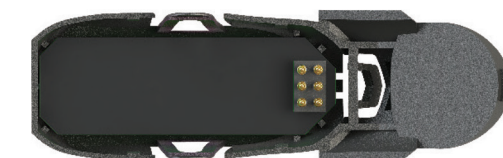


PRODUCT FEATURES

- ✓ SOURCE CAPTURE – ON-TORCH FUME EXTRACTION.
- ✓ EXTRACTS UP TO 95% OF HARMFUL WELDING FUMES AND TOXIC PARTICULATES DIRECTLY AT THESOURCE BEFORE AIRBORNE.
- ✓ ERGONOMIC GRIP/HANDLE ALL-DAY COMFORT AND STABILITY FOR THE WELDER.
- ✓ EXTRACTION NOZZLE FROM PPS WITH AN ALUMINUM RADIATION PROTECTION SHIELD AND INTERCHANGEABLE PARTS.
- ✓ EXTREMELY FLEXIBLE SUCTION HOSE.
- ✓ OPTIONAL: FLAME RETARDANT PROTECTION HOSE.
- ✓ ROTATING CONNECTION COUPLER.
- ✓ CABLE SUPPORT BEHIND Y-PIECE.
- ✓ EFFECTIVE SUCTION FLOW BETWEEN 18-20M³.
- ✓ TIG AIRFLOW METER – CAN BE USED WITH ALL TIG TORCHES.

PCB PROTECTIONPLATE

The PCB module is fixed & completely covered by a protection plate, which keep the PCB safe from HF and dirt. The unique gold-plated spring contacts ensure perfect connection with the welding machine.



THE NEW 8TE-17 AND 8TE-30 TIG EXTRACTORS

Our TIG Extractors protect the welders and other workers in the factory from harmful fumes and metals like Aluminium, Chromium, Iron, Manganese and Nickel which are possibly released during the welding process.

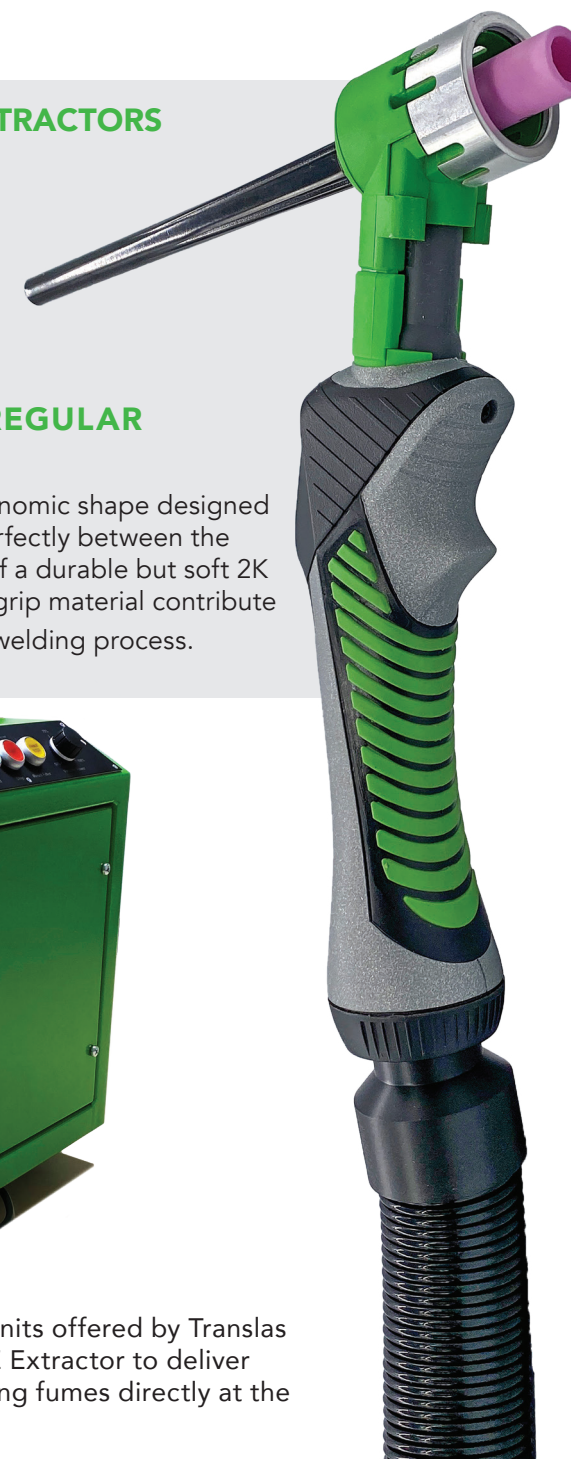
SAME CONVENIENT HANDLE AS REGULAR 8XT TORCH.

The 8TE TIG Extractor handle has a unique ergonomic shape designed to suit the shape of the welder's hand, fitting perfectly between the thumb and index fingers. The grip is made out of a durable but soft 2K TPE rubber. Both the ergonomic shape and the grip material contribute to the excellent stability of the torch during the welding process.



CLEARO2 T100 / T200

The ClearO2 T100 / T200 portable extraction units offered by Translas were specially engineered to work with the 8TE Extractor to deliver the best results - up to 95% extraction of welding fumes directly at the source.



EXTRACTION



8TE TIG EXTRACTOR LINE



8TE TIG EXTRACTOR

17 AIR COOLED

DC - 140 AMP
AC/DC - 100 AMP
Duty Cycle - 35%

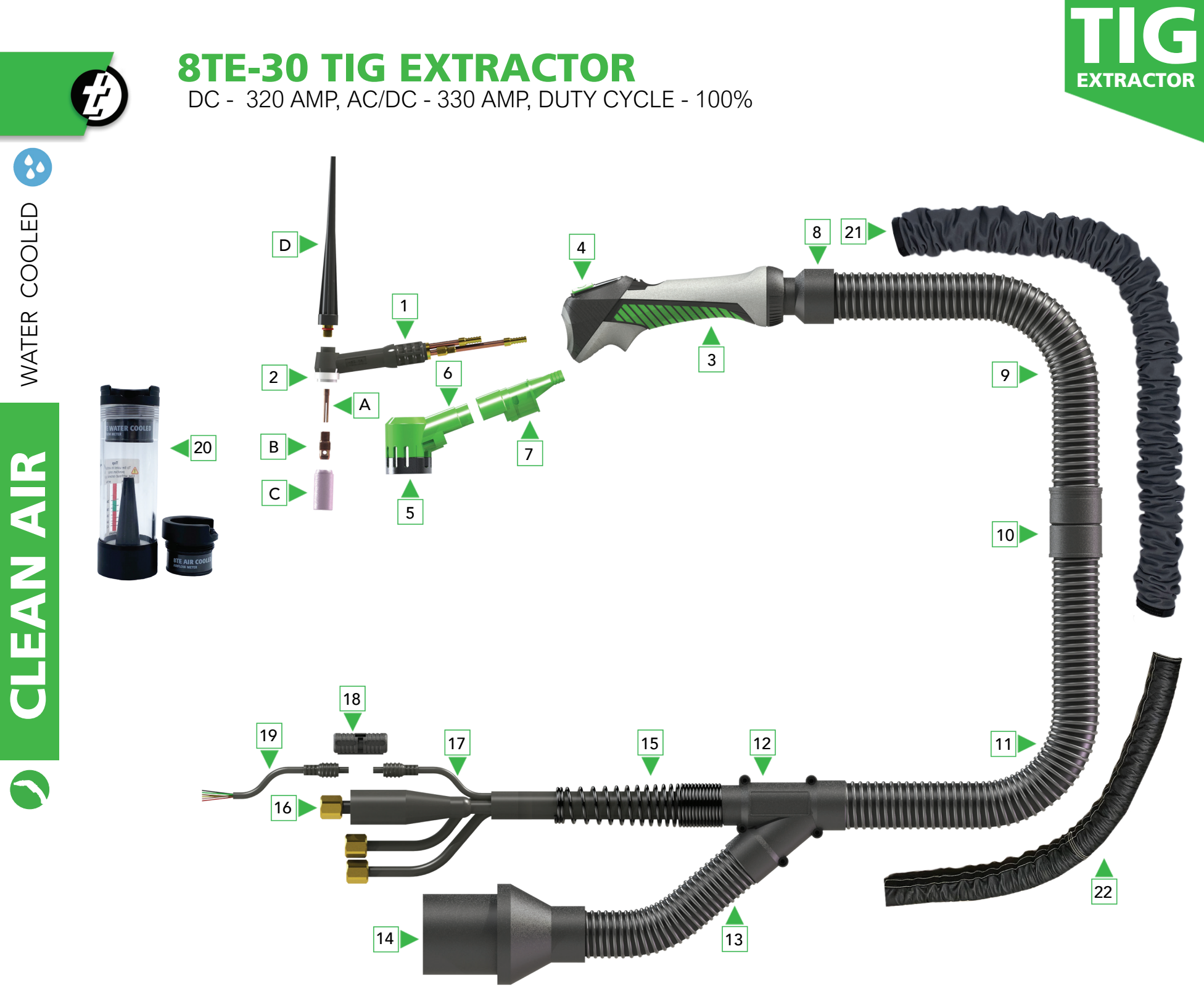


8TE TIG EXTRACTOR

30 WATER COOLED

DC - 320 AMP
AC/DC - 230 AMP
Duty Cycle - 100%

EXTRACTION



8TE-30 TIG EXTRACTOR

DC - 320 AMP, AC/DC - 330 AMP, DUTY CYCLE - 100%

ITEM	PART NO.	DESCRIPTION	PACK QTY
COMPLETE TORCHES			
	8TE60014704650	8TE-30 Tig Extractor 4mtr 35-50mm²+tules+1/4'G	1
	8TE60014708650	8TE-30 Tig Extractor 8mtr 35-50mm²+tules+1/4'G	1
	8TE60014704990	8TE-17 Tig Extractor 4mtr CA Fronius 35-50mm²+tules	1
	8TE60014708990	8TE-17 Tig Extractor 4mtr CA Fronius 35-50mm²+tules	1
	8TE60014704600	8TE-30 Tig Extractor 4mtr M12x1+3/8'G+1/4'G	1
	8TE60014708600	8TE-30 Tig Extractor 8mtr M12x1+3/8'G+1/4'G	1
	8TE60014704800	8TE-30 Tig Extractor 4mtr 3/8'G+3/8'G+1/4'G	1
	8TE60014708800	8TE-30 Tig Extractor 8mtr 3/8'G+3/8'G+1/4'G	1

These 8TE torches come as a standard with a one-button switch module and a trigger cable end without the plug. For other switch options and triggers cable end with plug, we refer to pages 42 and 43.

ITEM	PART NO.	DESCRIPTION	PACK QTY
CONSUMABLES			
A	500650	13N20 Collet 0,5mm	5
	500652	13N21 Collet 1,0mm	5
	500654	13N22 Collet 1,6mm	5
	500656	70066 Collet 2,0mm	5
	500658	13N23 Collet 2,4mm (standard)	5
	500660	13N24 Collet 3,2mm	5
B	500750	13N25 Collet body 0,5mm	5
	500752	13N26 Collet body 1,0mm	5
	500754	13N27 Collet body 1,6mm	5
	500756	70067 Collet body 2,0mm	5
	500758	13N28 Collet body 2,4mm (standard)	5
	500760	13N29 Collet body 3,2mm	5
C	500500	13N08 Ceramic cup 6,4mm Gr. 4	10
	500502	13N09 Ceramic cup 7,9mm Gr. 5	10
	500504	13N10 Ceramic cup 9,5mm Gr. 6 (standard)	
	500506	13N11 Ceramic cup 11,1mm Gr. 7	10
	500508	13N12 Ceramic cup 12,7mm Gr. 8	10
	500510	13N13 Ceramic cup 15,9mm Gr. 10	10
D	500344	41V35 Back cap medium	5
	500340	41V24 Back cap long (standard)	5



ITEM	PART NO.	DESCRIPTION	PACK QTY
SPARE PARTS			
1	520700	Torch body water cooled	1
2	500400	598882 Heat shield	5
3	8X9987	Handle green complete with 1-button switch	1
	580150	Inside handle stop (Not shown)	1
	580160	Inside hose stop (Not shown)	2
4	8X9518	Switch moudule green 1-button complete	1
For other switch options we refer to page 43			
5	581000	Heat shield aluminium	1
6	5803002	Suction head	1
7	5801002	Torchbody adaptor	1
8	581050	Ball-and-socket joint	1
9	580400	Suction hose front 1mtr black	1
	442352	Suction hose cover 1mtr (Not shown)	1
10	5810602	Connection part for 25mm hose (When torch is 4mtr)	1
	5810622	Connection part for 30mm hose (When torch is 8mtr)	1
11	340102	Suction hose 25mm black p/mtr (When torch is 4mtr)	1mtr
	340505	Suction hose 30mm black p/mtr (When torch is 8mtr)	1mtr
12	5802002	Y-Piece set	1
	5802202	Inside stop to block suction smoke (Not shown)	1
	580250	Adaptor to fit 30mm hose on Y-Piece (When torch is 8mtr)	1
13	340102	Suction hose 25mm black p/mtr	1mtr
14	581068	Adaptor Suction hose 25mm -> 56mm	1
	581069	Adaptor Suction hose 25mm -> 38mm	1
15	580215	Spring 27mm for Y-Piece	1
16	Power/Water cable	On request as this is depending on machine connection	1
17	306550	Switch cable 4mtr (QuickConnect)	1
	306552	Switch cable 8mtr (QuickConnect)	1
18	306545	Locking clip (QuickConnect)	1
19	306559	Switch cable end without plug (QuickConnect)	1
20	371300	Airflow meter Extractor	1
21	442352	Hose Cover (Optional)	1
22	5820004	Leather Cover for 4mtr torch (optional)	1
23	260027	Leather Cover for 8mtr torch (optional)	1

For other Switch cable ends with plug, we refer to Page 42



8TE TIG EXTRACTOR



SWITCH CABLE ENDS



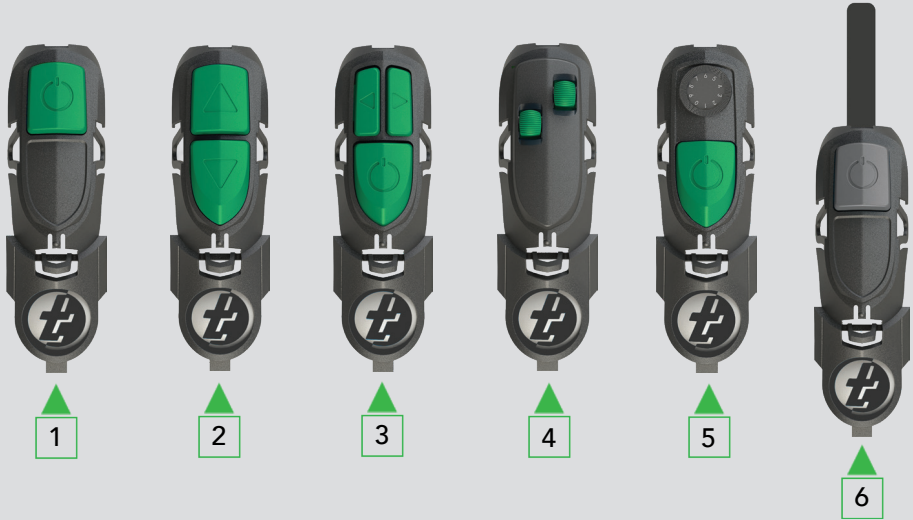
CONFIGURATION SHEET

With this configuration sheet, you can easily select the plug applicable for the various welding machines. You can also select the switch types and water- or gas-cooled applications.

ITEM	PART NO.	MACHINE BRAND	PLUG TYPE	GAS COOLED	WATER COOLED	ONE BUTTON	TWO BUTTON	THREE BUTTON	FOUR BUTTON	ONE BUTTON POT
1	507541	Cebora	10-pins Cebora	☑	☑	☑		☑		
	507549	Cebora	10-pins Cebora	☑	☑	☑				☑
2	507450	Esab	2-pins Amphenol	☑	☑	☑				
3	5004623	EWM	5-pins Tüchel	☑	☑	☑	☑			
4	507714	EWM	8-pins UTG	☑	☑	☑	☑	☑	☑	
3	507552	Jäckle	5-pins Tüchel	☑	☑	☑	☑			
	507550	Jäckle	5-pins Tüchel	☑	☑	☑		☑	☑	
5	507561	Jäckle	7-pins Tüchel	☑	☑					☑
6	50048227	Fronius	9-pins Fronius	☑	☑	☑	☑	☑		
	50048247	Fronius	9-pins Fronius	☑	☑				☑	
7	507435	Kemppi	4-pins Amphenol							
8	5075371	Kemppi	7-pins Amphenol MLS	☑		☑		☑		
	5075372	Kemppi	7-pins Amphenol MLS		☑	☑		☑		
	5075373	Kemppi	7-pins Amphenol MLS	☑						☑
	5075374	Kemppi	7-pins Amphenol MLS		☑					☑
9	507611	Migatron	7-pins Amphenol	☑		☑				☑
	507621	Migatron	7-pins Amphenol		☑	☑				☑
9	507612	Rehm	7-pins Amphenol	☑		☑	☑			
	507613	Rehm	7-pins Amphenol		☑	☑	☑			
	507615	Rehm	7-pins Amphenol	☑	☑					☑



8TE TIG EXTRACTOR



SWITCH MODULE OPTIONS

ITEM	PART NO.	DESCRIPTION	PACK QTY
1	8X9518	8TE Switch module 1-button complete	1
2	8X9528	8TE Switch module 2-button complete	1
3	8X9538	8TE Switch module 3-button complete	1
4	8X9558	8TE Switch module 4-button rocker complete	1
5	8X9578	8TE Switch module 1-button 10 kOhm complete	1
6	8X9560	8TE Switch module 1-button lamelle complete	1

TIG CONSUMABLES

All international wear parts are stock products and fully interchangeable.

END FITTINGS

We supply almost every common end fitting for TIG power cables.

CERAMIC CUPS

Complete range of ceramics is available.



TRANSLAS 
DUTCH TORCH TECHNOLOGY

CLEARO2 



HI-VAC UNITS

EXTRACTION

NO FUMES, ONLY CLEAN AIR





HI-VAC UNITS INTEGRATED FUME EXTRACTION



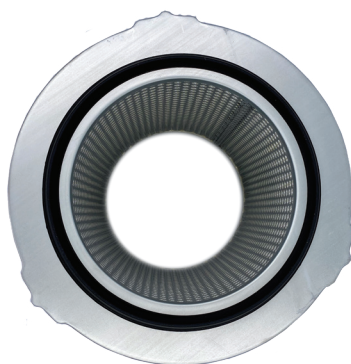
CLEARO2
UNITS



**ENGINEERED FOR THE TRANSLAS
7XE, 8XE & 8TE, EXTRACTOR GUNS**

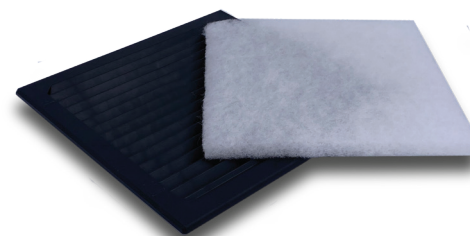
Powerful, Flexible & Mobile.

The ClearO2 portable extraction units offered by Translas were specially engineered to work with the 7XE, 8XE, & 8TE Extractors to deliver the best results - up to 98% extraction of welding fumes directly at the source. The ClearO2 portable extraction units and solutions are ready to use systems, designed for maximum convenience for the welder during work.



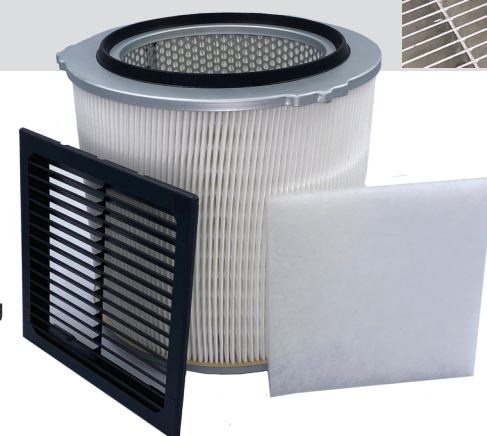
AUTOMATIC FILTER CLEANING

The ClearO2 W-series have an automatic cleaning function by reverse compressed air pulse. The moment the under pressure in the filter is too high, the units start to clean the filters automatically. A manual cleaning function can be done by pressing a single button. With a large filter area the ClearO2 Hi-vac units are the most efficient units of their size.



POWERFUL FILTRATION

With the combination of a 7XE, 8XE, 8TE Extractor and a ClearO2 unit, the captured fumes are filtered with an efficiency > IFA 99.8%. The powerful solution is suitable for high production welding environments.



LARGE FILTER AREA

This is one of the most efficient units of its size with a filter area of 5m².

CLEARO2
UNITS



HI-VAC UNITS INTEGRATED FUME EXTRACTION



CLEARO2
UNITS



EFFICIENT MOTOR SYSTEM

The electric motor of the units is designed to work continuously. Due to the automatic cleaning function and the simplified motor system, the units' maintenance is minimal, making them long-lasting and time saving. The automatic start/stop function was engineered to preserve energy and synchronize the units with the Translas Extractor guns. The moment the gun is out of the gun holder, the machine automatically starts working.

There are two start/stop options: the clamp, which works on induction, and the gun holder. For both options, after stopping welding or putting the gun back into the holder, the machine stops working after about 20 seconds.

LIGHT & MOBILE

**IFA
99.8%**

**ONLY GENERATES
65dB**



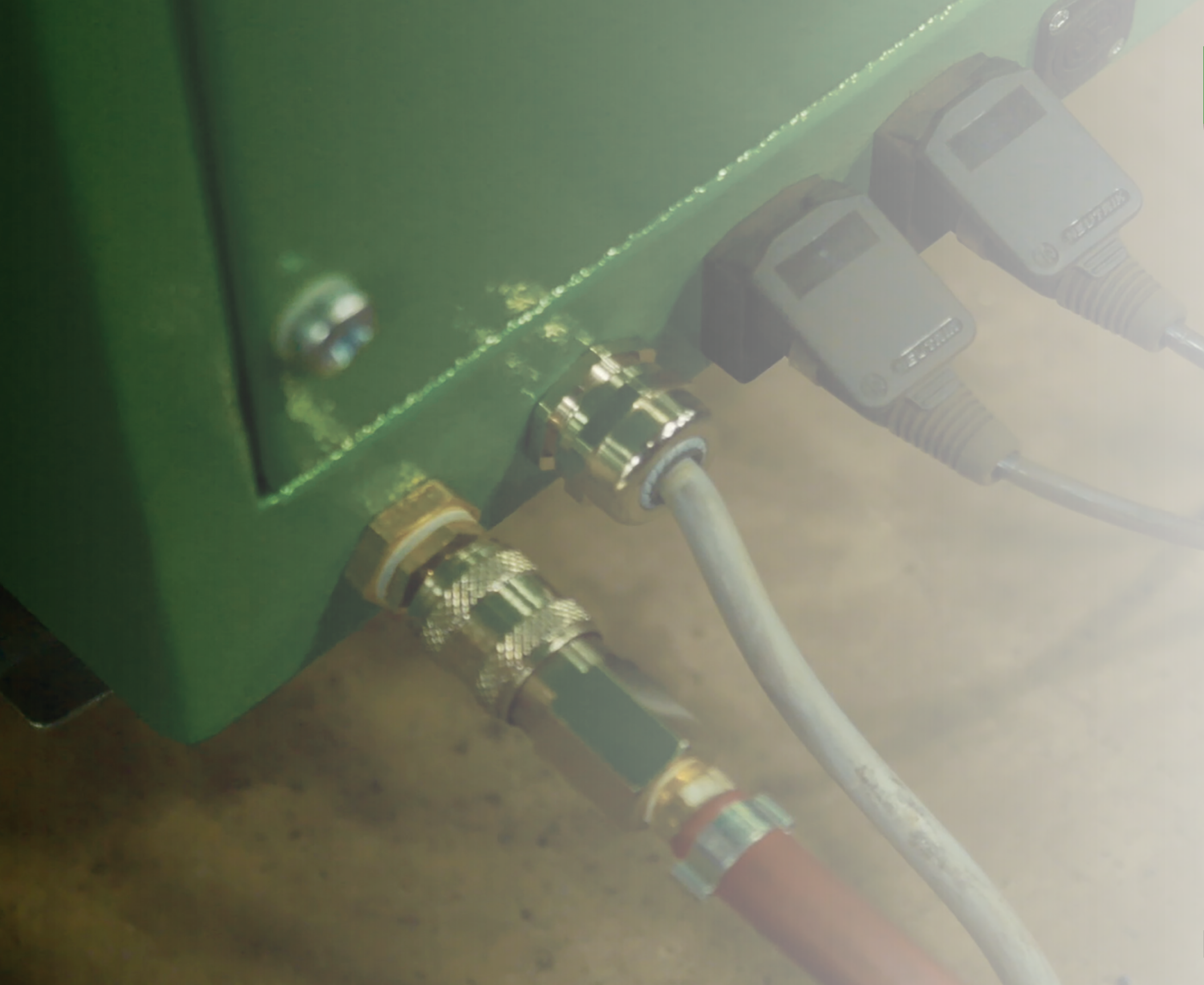
AUTO START/STOP OPTIONS

These options are designed to work only with the 7XE, 8XE, & 8TE Extractors guns by using the clamp auto start/stop.

- ✓ **DESIGNED FOR THE 7XE, 8XE, & 8TE EXTRACTOR TORCHES**
- ✓ **MOBILE, WITH WHEELS OR CRANE HOOKS**
- ✓ **UNITS FOR 1 - 2 WELDERS**
- ✓ **SUITABLE FOR HIGH-PRODUCTION ENVIRONMENT**
- ✓ **QUIET < 65dB & EFFICIENT**

CLEAN AIR

EXTRACTION



MIG CLEARO2 UNITS
INTEGRATED FUME EXTRACTION



**CLEARO2
UNITS**

MIG HI-VAC UNITS



W 100 CLEARO2
UNIT

MIG HI-VAC UNITS



W 200 CLEARO2
UNIT

EXTRACTION



MIG CLEARO2 W100/150

INTEGRATED FUME EXTRACTION

FOR ONE WELDER



CLEARO2
UNITS



PART NO.	DESCRIPTION	PACK QTY
ClearO2 W100 - W150		
374610000000	Welding fume unit ClearO2 W100 220 - 240 V 50 - 60 Hz 1.5 KW	1
374615000000	Welding fume unit ClearO2 W150 380 - 420 V 50 - 60 Hz 1.5 KW	1

Dimensions	(L x B x H) 700 x 440 x 585 / 630mm (without / with wheels)
Implementation	Mobile on 4-wheels. Two rotating with locks
Power Supply	(W100) = 220 - 240 V / 50 - 60 Hz (W150) = 380 - 480 V / 50 - 60 Hz
Motor power	Max 1.5 KW
Suction Flow	Max. 180 m³/h (free blowing)
Suction Flow Effective	Max. 65m³/h
Working Pressure	Max. 36000Pa (el. Controlled)
Filter Surface	5m² Active filter surface, Filter efficiency: IFA >99.8%
Working Temperature	0 to +50°C
Max. DC	DC: 100%
Inlet	51 mm
Weight	Ca. 45 kg
Noise Level	Max. dB(A) <65Db(A) (at 100% suction flow)
Filter method	Disposable filter
Certifications	CE, W3, and CSA



MIG CLEARO2 W200

INTEGRATED FUME EXTRACTION

FOR TWO WELDER



CLEARO2
UNITS



PART NO.	DESCRIPTION	PACK QTY
ClearO2 W200		
374620000000	Welding fume unit ClearO2 W200 380 - 420 V 50 - 60 Hz 3 KW	1

Dimensions	(L x B x H) 700 x 530 x 560 / 630mm (without / with wheels)
Implementation	Mobile on 4-wheels. Two rotating with locks
Power Supply	400 - 480 V / 50 - 60 Hz
Motor power	Max 3.0 KW
Suction Flow	Max. 250 m³/h (free blowing)
Suction Flow Effective	Max. 65m³/h
Working Pressure	Max. 45000Pa (el. Controlled)
Filter Surface	5m² Active filter surface, Filter efficiency: IFA >99.8%
Working Temperature	0 to +50°C
Max. DC	DC: 100%
Inlet	51 mm
Weight	Ca. 58 kg
Noise Level	Max. dB(A) <65Db(A) (at 100% suction flow)
Filter method	Disposable filter
Certifications	CE, W3, and CSA



TIG CLEARO2 UNITS
INTEGRATED FUME EXTRACTION



**CLEARO2
UNITS**

TIG HI-VAC UNITS



T 100 CLEARO2
UNIT

TIG HI-VAC UNITS



T 200 CLEARO2
UNIT

EXTRACTION



TIG CLEARO2 T100

INTEGRATED FUME EXTRACTION

FOR ONE WELDER



CLEARO2
UNITS



Dimensions	(L x W x H) 620 x 380 x 465mm
Power Supply	230V/50Hz
Motor Power	1.2 KW
Suction Flow	Max. 125m3/h
Suction Flow Effective	Max. 38 CFM (Translas Extractors)
Working Pressure	Max. 30000Pa
Filter Surface	2,5m2 (!! Aktive Filteroberfläche !!)
Filter Efficiency	IFA > 99,8%
Inlet	51mm (optional 44mm)
Weight	Ca. 30 kg
Noise Level	Max. dBA (A) < 65dBA (at 100% Suctionflow)
Filter Method	Disposable filter
Certifications	CSA, CE

W3 is under construction.
Option: Start/Stop cable

PART NO.	DESCRIPTION	PACK QTY
ClearO2 T100		
3756100030000	ClearO2 T100 230V 50Hz 1.2kW	1



TIG CLEARO2 T200

INTEGRATED FUME EXTRACTION

FOR TWO WELDERS



CLEARO2
UNITS



Dimensions	(L x B x H) 700 x 440 x 585 / 630mm (without / with wheels)
Implementation	Mobile on 4-wheels. Two rotating with locks
Power Supply	(W100) = 220 - 240 V / 50 - 60 Hz (W150) = 380 - 480 V / 50 - 60 Hz
Motor power	Max 1.5 KW
Suction Flow	Max. 180 m³/h (free blowing)
Suction Flow Effective	Max. 65m³/h
Working Pressure	Max. 36000Pa (el. Controlled)
Filter Surface	5m² Active filter surface, Filter efficiency: IFA >99.8%
Working Temperature	0 to +50°C
Max. DC	DC: 100%
Inlet	51 mm
Weight	Ca. 45 kg
Noise Level	Max. dB(A) <65Db(A) (at 100% suction flow)
Filter method	Disposable filter
Certifications	CE, W3, and CSA

PART NO.	DESCRIPTION	PACK QTY
ClearO2 T200		
3756200030000	ClearO2 T200 220-240V 50-60Hz 1.5kW	1



ITEM	PART NO.	DESCRIPTION	PACK QTY
SPARE PARTS			
1	371012	Torch holder ø40mm for automatic start/stop 5mtr ClearO2	1
	371013	Torch holder ø40mm for automatic start/stop 10mtr ClearO2	1
	371014	Torch holder ø50mm for automatic start/stop 5mtr ClearO2	1
	371015	Torch holder ø50mm for automatic start/stop 10mtr ClearO2	1
2	374010	Sensing cable auto start / stop 4mtr W-serie	1
3	3740103	Extension cable auto start / stop incl. 5-p plug W-serie 3mtr	1
	3740105	Extension cable auto start / stop incl. 5-p plug W-serie 5mtr	1
	3740110	Extension cable auto start / stop incl. 5-p plug W-serie 10mtr	1
4	374020	Filtermat W-serie ClearO2 5m2	1
5	374025	Filtermat W-serie ClearO2 (set/5pc)	1
6	374099	Ball valve to reduce the suction flow	1
7	3740106	Pressure reducing value 5 - 15 bar 1/4-NP7.2	1
8	37422505	ClearO2 suction hose black ø51mm 5mtr	1
8	7422510	ClearO2 suction hose black ø51mm 10mtr	1
9	374126	Coupler for suction hose black ø51mm 5mtr	1
10	374130	Coupler to extend the suction hose ø51mm	1
11	398110	Coupler for suction hose ø51mm side 8XE	1
12	374149	Y-Branch Adapter for T200	1



Translas is a Dutch manufacturer of welding guns since 1960. A company founded by welders, for welders with a passion for innovation and new technologies, continually strives to engineer innovative products that boast a distinctive design, quality, and functionality.

www.translas.com

NOTES:



B Y W E L D E R S . F O R W E L D E R S

WELDFAST

(UK) LTD



Speedwell Road, Chesterton,
Newcastle-Under-Lyme,
ST5 7RG

Email - Sales@weldfastuk.co.uk

Tel : 01782 566553

Fax : 01782 566123

Website : www.weldfastuk.co.uk

